

Would you and your dog like to save lives?

We would like to keep a list of dogs who are willing, and able to be blood donors.

What is involved?

We need dogs who are

- Quiet
- In good health
- Over 20 kg body weight
- Not obese
- Not on any medication

We need owners who are able and prepared to bring their dogs to the surgery at short notice. Blood donations are almost always used for emergency treatment, so are rarely able to plan for them in advance.



We only need to give blood transfusions a few times a year, but when we need them it is important that we have blood available quickly. Your dog will not be asked to donate any more than every three months and probably only once or twice in their whole life.

Why do we need blood donors?

Blood is used to treat a variety of different conditions, including:

Bleeding animals

- Following an accident, often after an animal is hit by a car
- During major surgery a lot of blood can be lost, so a transfusion can be required during the operation
- Tumours within the body e.g. spleen can start bleeding. A blood transfusion may be required to stabilise the animal

Poisoning

- Many common rat poisons work by affecting blood clotting
- A blood transfusion may be required to replace these substances

Autoimmune disease

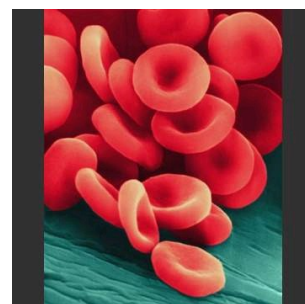
- The immune system will sometime attack its own body tissues, in some cases these can include blood cells

Parasites

- Some rare parasites will damage blood cells

Cancer

- Cancer can affect bone marrow and red blood cell production
- Certain types of chemotherapy can also affect red blood cells



Red Blood Cells

What does blood donation involve for my dog?

It will take about 60 minutes for the donation.



- Your dog will have an area on their neck or leg clipped and scrubbed with an antibacterial wash
 - We will then collect between 250ml and 500ml (1/2 to 1 pint) of blood depending on the size of dog
 - Sedation or anaesthesia should not be needed (if sedation is required we would not consider your dog to be suitable as a blood donor, because it would not be in their best interest)
 - This blood is collected into a blood bag, as with people and immediately administered to a needy patient.
 - We do not store blood for transfusion – it needs to be fresh, which is why we need blood donors to be available at short notice
- Your dog will be given a biscuit and a drink

If you are willing and able to donate, please register your dog. To do so, please complete the form on our website in the contact us section.

We are organising a formal blood collection drive with the national pet blood bank in the future. They cannot come this far from their base until they get new equipment. In the meantime we will call on blood donors as we need them.

